



350 S. St. Charles St. Jasper, In. 47546
Ph. 812.482.2932 Fax 812.634.6632
www.ridetech.com

Part # 11214010
93-02 Rear Camaro CoolRide Kit

COOLRIDE KIT
Components:

2	90009000	Tapered sleeve air spring
1	90000416	Upper air spring bracket – Driver side
1	90000417	Upper air spring bracket – Passenger side
2	90000290	Lower rear air spring roll plate

Hardware:

4	99371001	3/8" x 3/4" USS bolt	Air spring to upper bracket
4	99373005	3/8" lock washer	Air spring to upper bracket
6	99373003	3/8" SAE flat washer	Air spring mounts
2	99371027	3/8" x 1" carriage bolt	Upper bracket to car
2	99372002	3/8" USS Nylok nut	Upper bracket to car

SHOCK KIT

Shock:

2	22889999	HQ Smooth Body Shock Cartridge
2	70011138	3/4" ID Shock Bushing
2	70011182	5/8" ID Shock Sleeve

Components:

4	70011140	Stem Bushings
4	70011141	Stem Washers
2	90001619	Shock stud
2	90000471	Shock Stud Spacer

Hardware:

4	99372006	3/8" - 24 Jam Nut	Upper Shock Stud
---	----------	-------------------	------------------

COOLRiDE[®]

by Air Ride Technologies

1. Raise and support vehicle at a safe and comfortable working height.
2. Support the axle then remove the shock absorber, coil spring, and upper coil spring rubber. Refer to service manual for proper disassembly procedure. It is easier to do one side at a time. You will have to pull the axle down to slip the coil spring out.

***** Must Use Supplied Shocks *****



3. Apply thread sealant to a 90 degree air fitting and screw it into the top of the air spring.

4. Fasten the upper mount to the air spring with two 3/8" x 3/4" bolts, flat washers and lock washers.

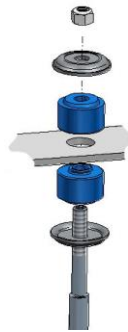


5. This hole in the inner fender must be enlarged to 3/8".

6. The 3/8" Carriage bolt, Nylok nut and flat washer will fasten the upper bracket to the coil spring pocket.



Upper Shock Mounting



Lower Shock Mounting



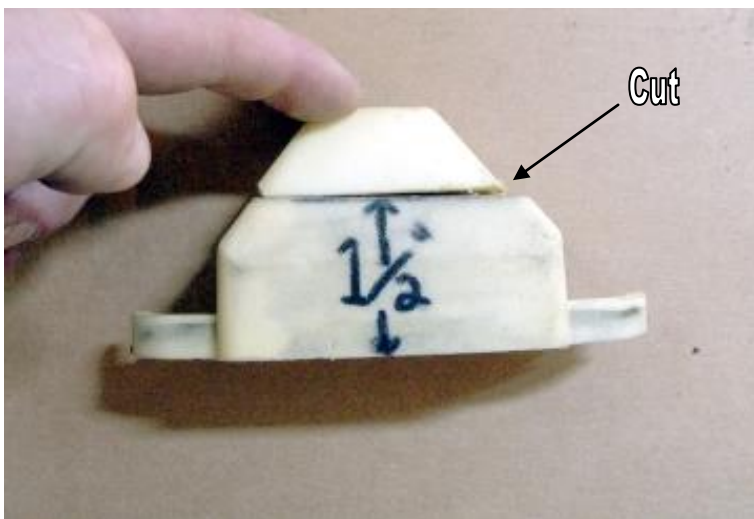
7. Install the supplied shock absorber. The stud of the shock will go through the upper air spring mount and will help hold it in place.

8. Place the lower air spring roll plate over the spring retainer on the axle.

Note: The air spring will not be mechanically attached to the axle. Be sure to keep at least 20 psi in the rear springs at all time.



9. Check air spring clearance through full suspension travel. Allowing the air spring to rub will result in failure and is not a warrantable situation.



9. The factory bump stop must be used to avoid damage to the air spring. But to get maximum drop from the kit it must be cut down to 1 1/2" tall.

10. Ride height on this air spring is approximately 9" tall. **Driving with the car too low or too high may cause damage to the air spring or shocks absorbers.**