

Compressor

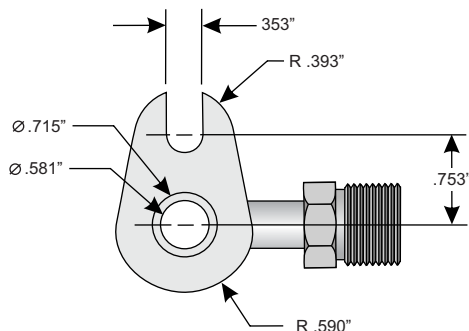
Block Fittings

Chrysler

Part # 045019

**Chrysler HEMI # 10
90° Compressor Block**

5.7 HEMI Compressor Block
#10 Suction Side

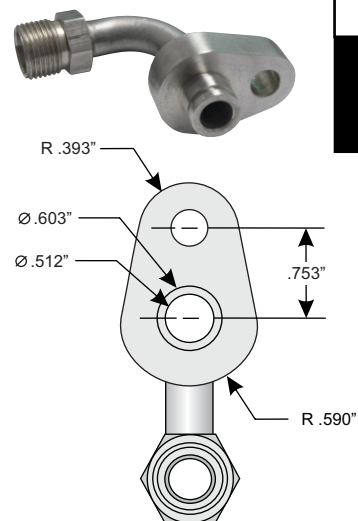


Retail \$ 42.50

Part # 045020

**Chrysler HEMI # 8
90° Compressor Block**

5.7 HEMI Compressor Block
#8 Discharge Side

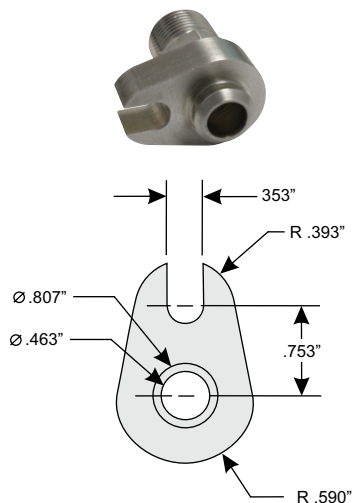


Retail \$ 42.50

Part # 045021

**Chrysler HEMI # 10
Compressor Block**

5.7 HEMI Compressor Block
#10 Suction Side

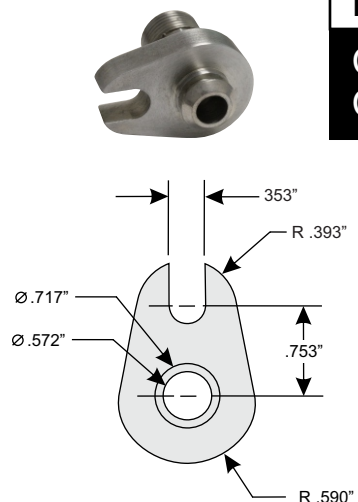


Retail \$ 32.50

Part # 045022

**Chrysler HEMI # 8
Compressor Block**

5.7 HEMI Compressor Block
#8 Discharge Side



Retail \$ 32.50

NOTE: Price subject to change without notice.