



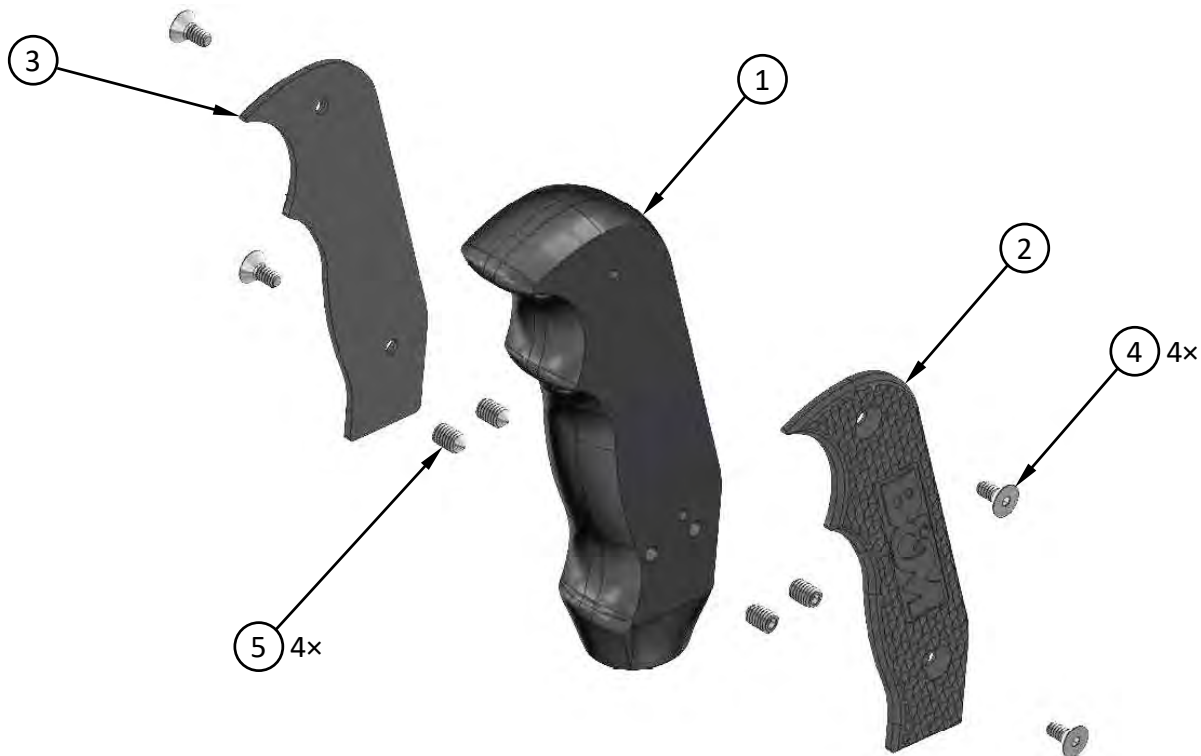
Installation Instructions
MAGNUM GRIP SHIFTER HANDLE

2008-2021 POLARIS RZR

2017-2019 Hisun Sector 550

2016-2019 Hisun Sector 750

Catalog No. (Grip Color): 81223 (Black);
81224 (Blue); 81225 (Green); 81226 (Orange);
81227 (Red); 81228 (White); 81229 (Yellow)



REFER TO PARTS LIST ON NEXT PAGE



Installation Instructions
MAGNUM GRIP SHIFTER HANDLE
2008-2021 POLARIS RZR
2017-2019 Hisun Sector 550
2016-2019 Hisun Sector 750
 Catalog No. (Grip Color): 81223 (Black);
 81224 (Blue); 81225 (Green); 81226 (Orange);
 81227 (Red); 81228 (White); 81229 (Yellow)

PARTS LIST

ITEM NO.	PART NO.	DESCRIPTION	QTY.
1	4001717	MAGNUM GRIP SHIFTER HANDLE BODY, POLARIS RZR	1
2	4001492	MAGNUM GRIP SHIFTER PLATE, LEFT, DIAMOND KNURL – BLACK	1
	4001724	" " " " " " " " – BLUE	
	4001732	" " " " " " " " – GREEN	
	4001730	" " " " " " " " – ORANGE	
	4001726	" " " " " " " " – RED	
	4001734	" " " " " " " " – WHITE	
	4001728	" " " " " " " " – YELLOW	
3	4001495	MAGNUM GRIP SHIFTER PLATE, RIGHT, DIAMOND KNURL – BLACK	1
	4001725	" " " " " " " " – BLUE	
	4001733	" " " " " " " " – GREEN	
	4001731	" " " " " " " " – ORANGE	
	4001727	" " " " " " " " – RED	
	4001735	" " " " " " " " – WHITE	
	4001729	" " " " " " " " – YELLOW	
4	3401537	SCREW, SOCKET, FLAT HEAD, 6-32 × 5/16", STAINLESS	4
5	3401538	SET SCREW, CONE POINT, 10-32 × 5/16", 18-8 SS	4

Before starting, take a moment to read and understand these instructions for your B&M Magnum Grip Shifter Handle. Use the parts drawing and list to verify your kit's contents. In the unlikely event of missing parts, please contact B&M Racing Technical Support for replacements. Direct all correspondence and warranty questions to:

We highly recommend that you retain all factory parts.

1. Turn off your vehicle's ignition and set the parking brake.



2. Carefully remove the stock shifter handle cap with a flat tip screwdriver or plastic trim tool.



3. Remove the shifter handle screw, then pull the handle off the shifter lever.



4. Thread the 4 set screws (Item 5) about 2-3 turns into the shifter handle body (1). (Two screws each side.)



5. Slide the shifter handle body all the way onto the shifter lever.



6. Tighten all 4 set screws to secure the shifter handle to the shifter lever.



7. Install the left and right side plates (2) and (3) with the 4 flathead screws (4). (Two screws each side.)

Congratulations, the installation of your B&M Magnum Grip Shifter Handle is now complete!